

Proam ammonia monitor secondary enclosures...

compact weather proof enclosures

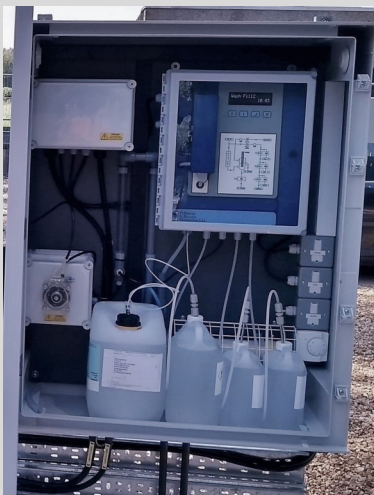
A range of compact GRP enclosures are available for UK supply, to provide weather protection to our Proam ammonia monitor. Depending upon the installation requirements, a single GRP enclosure may contain the Proam instrument, when using direct membrane filtration. Alternatively, a second GRP enclosure supports installation of our membrane filter panel, used for sample preparation from a pressurised /pumped sample supply. The enclosure(s) may be mounted directly on to an external wall, across the hand rail or onto a Unistrut stand. Just mains power, signal outputs and sample supply, need to be connected.

Proam Compact

Instrument: Proam Ammonia

Description: The Proam enclosure includes pre-installation of all components including fused spurs, frost protection & filtrate delivery into a single weather proof, GRP enclosure. Simply mount the enclosure & connect mains power, outputs signals & sample supply.

Dimensions: 1056 x 852 x 350 mm



Panel Filter

Instrument: Proam Panel Filter

Description: The optional PPM Panel Filter may be integrated into an additional GRP enclosure, located to the LHS side of the Proam enclosure. The panel filter assembly is designed to receive a pumped sample and removes particulate and biology, to improve analyser performance.

Dimensions: 849 x 636 x 300 mm



Panel Filter & Peri-Pump

Instrument: Proam Panel Filter

Description: The optional PPM Panel Filter & peristaltic sample pump may be accommodated into an additional GRP enclosure with frost protection, located to the LHS of the Proam enclosure. The peristaltic sample pump configuration is ideal for intermittent sample conditions or where the depth of sample cannot allow installation of a submersible sample pump.

Dimensions: 1056 x 852 x 350 mm



www.pollution-ppm.co.uk

Southern Sales & Service Centre (Head Office)

Units 18 & 19 Bourne Enterprise Centre,
Borough Green, Kent TN15 8DG.

tel: 01732 882044

mail: TOC@pollution-ppm.co.uk

Northern Service Office

Unit 9 High Hazel Court, Coombe Road, Newthorpe,
Nottinghamshire. NG16 3SU.

tel: 01773 717318

mail: service@ppm-north.co.uk

The installed system (Proam enclosure with PPM Panel Filter & Peristaltic Pump enclosure)....

The enclosures may be mounted directly onto a wall, across the handrail or onto a Unistrut stand as shown below. Pre-installation reduces site installation time. Simply connect mains power, output signals and sample supply connections. The compact installation allows the preferred analytical ISE measurement technology, to be mounted immediately adjacent to the sample location, to enable real time process measurement and control.



In-situ sample filtration using our Direct Membrane Filtration assembly...

Where space is restricted or where a simplified installation is required, PPM can provide our Direct Membrane Filter assembly for in-situ sample filtration. This is an ideal sample preparation solution for applications which include measurement of liquors in diffused aeration tanks which include Kaldness media. The direct membrane filtration may also be directly mounted into final effluent chamber. The panel can be simply installed using a stainless steel chain with an optional hand rail mounting bracket. The membrane removes suspended solids and biology reducing bio-fouling with the instrument. Sample preparation improves operational performance and reduces planned maintenance.



Process monitoring applications include:

- ◆ Final effluent compliance measurement
- ◆ Aeration feedback control, of the nitrification process in activated sludge
- ◆ Feed forward load control of biological treatment processes
- ◆ Industrial process and surface water monitoring
- ◆ Detection of chemical spills into surface water
- ◆ Refrigerant and product loss detection.